

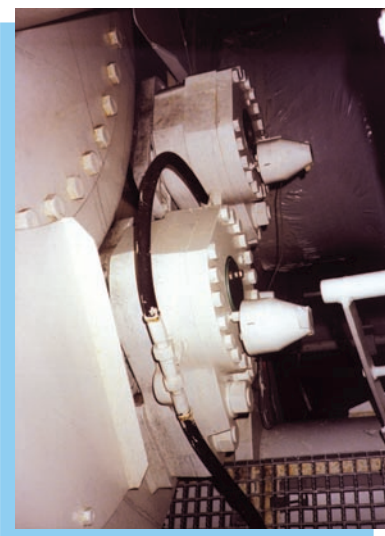
Another good reference

HUISMAN ITREC drilling rig equipped with SIME brakes !

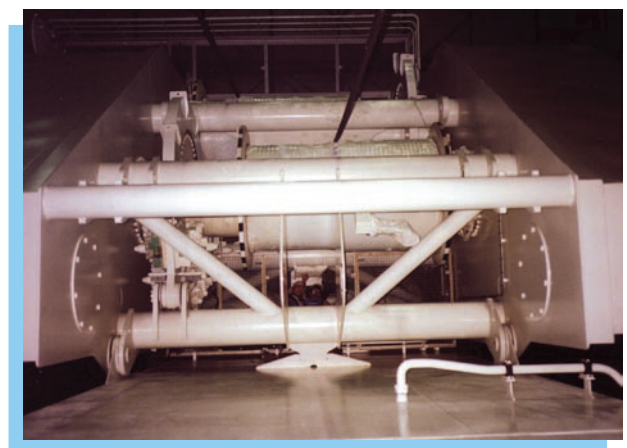
Newest design needs powerful as well as reliable brakes : Stromag was the best choice.

Equipment:

- Drawworks and Riser connect winch:
 - ➔ 10 x SH25-2 / US2-5 linings
- Riser connect winch:
 - ➔ 2 x SH25-1 / US2-5 linings
- Sandline winch:
 - ➔ 1 x SH18-1 / US2-3 linings



Left: closeview of SH25 emergency hydraulic brakes (in facility, before final installation)



Right: view from top of winding mechanism of «Xmas tree» (in facility, before final installation)